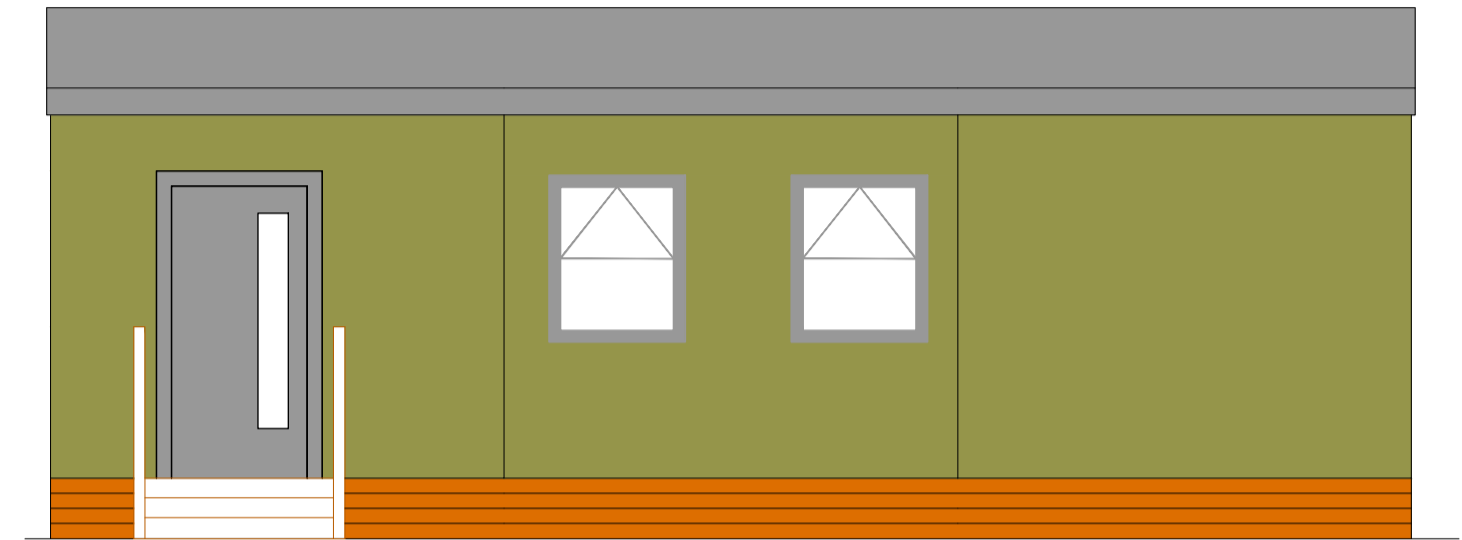
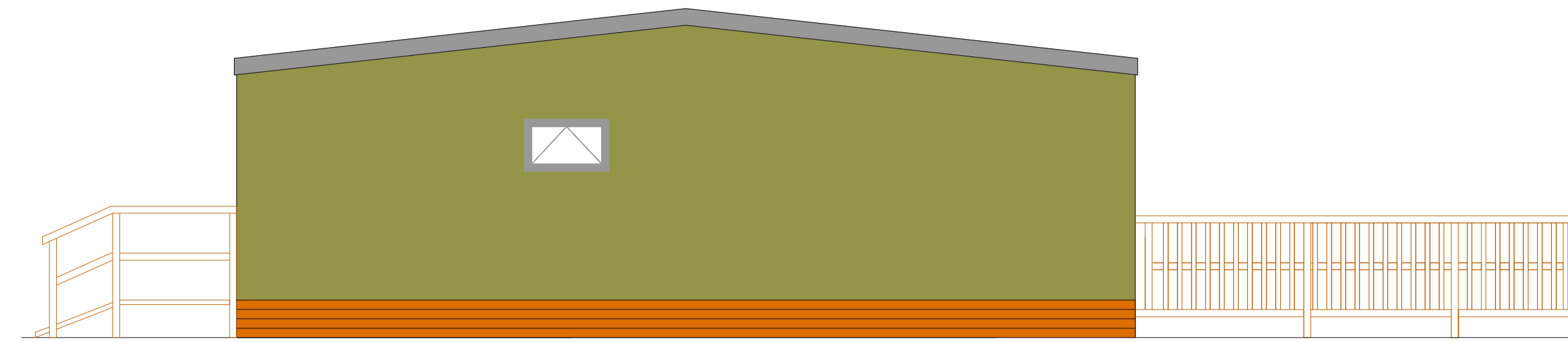




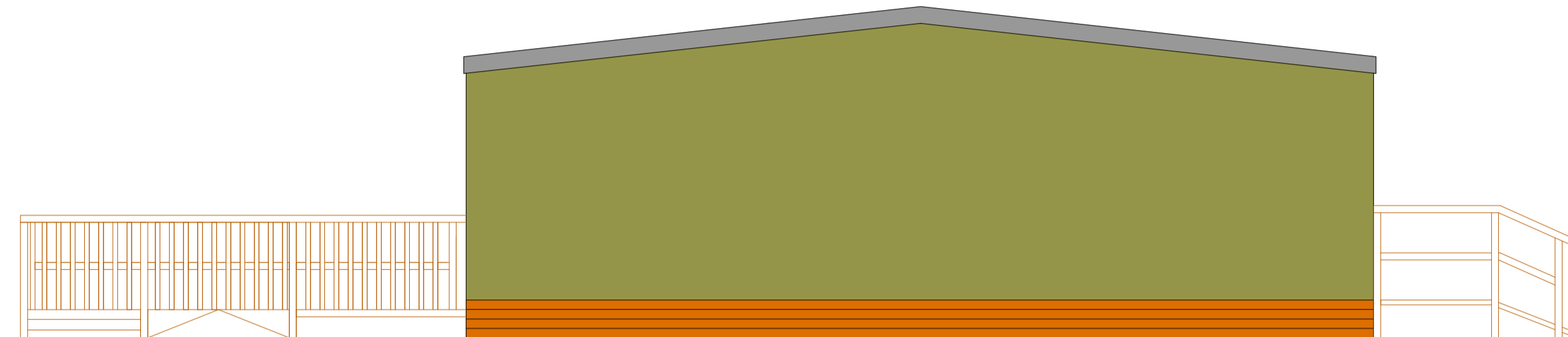
ELEVATION A
SCALE 1:50



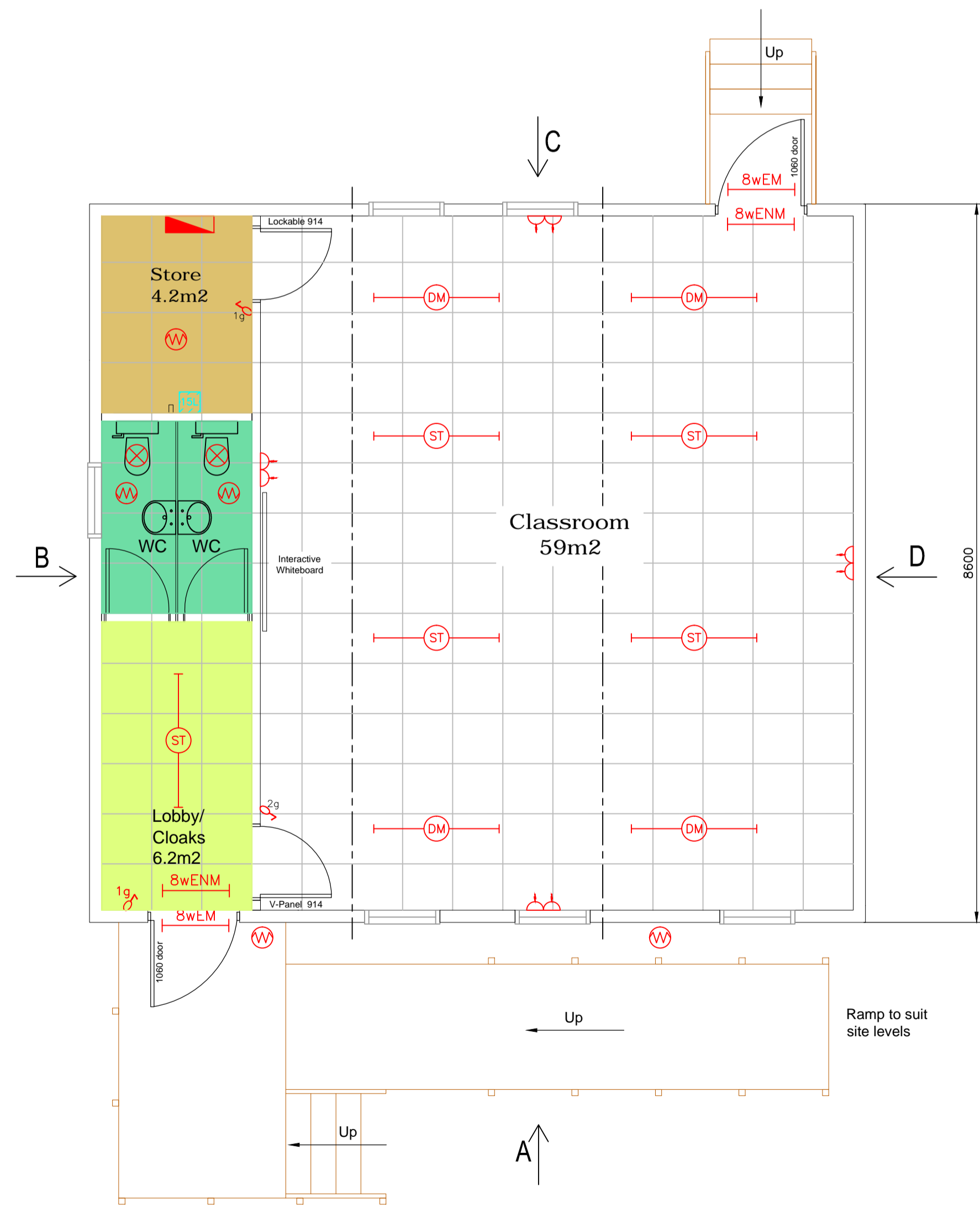
ELEVATION C
SCALE 1:50



ELEVATION B
SCALE 1:50



ELEVATION D
SCALE 1:50



FLOOR PLAN AND ELEVATIONS DRAWING
SCALE 1:50

NOTES
1.1 Do not scale.
1.2 All dimensions are in millimetres unless otherwise specified.

- KEY**
- Distribution board.
 - 28w 2D bulkhead light.
 - 28w 2D Emergency bulkhead light.
 - 1600 HF TS Dimmable fluorescent strip light.
 - 1600 HF TS fluorescent strip light.
 - 1600 HF TS Emergency fluorescent strip light.
 - 1600 HF TS fluorescent strip light with motion sensor.
 - 8w Emergency maintained light (250mm from ceiling).
 - 8w Emergency non maintained light (250mm from ceiling).
 - Single socket.
 - Double socket (540mm AFFL).
 - 20amp double pole switch (540mm AFFL).
 - Grid switch (1040mm AFFL).
 - Pull switch.
 - Water heater - Ariston ST50 (1100mm AFFL).

- ROOM TYPE COLOUR CODING**
- Classroom Area
 - Store Area
 - Corridor and Lobby Area
 - Abutions Area

NO.	REVISIONS	CHK	DATE



EXAMPLE PHOTOGRAPH - EXTERNAL



EXAMPLE PHOTOGRAPH - INTERNAL

REVISIONS

CLIENT
EXAMPLE DRAWING

SITE DETAILS
3 BAY SINGLE CLASSROOM WITH TOILETS

FILE NUMBER	DRAWING No.	REVISION
DRAWN DW	DATE 03/11/09	

Scale: 1:100 @ A3