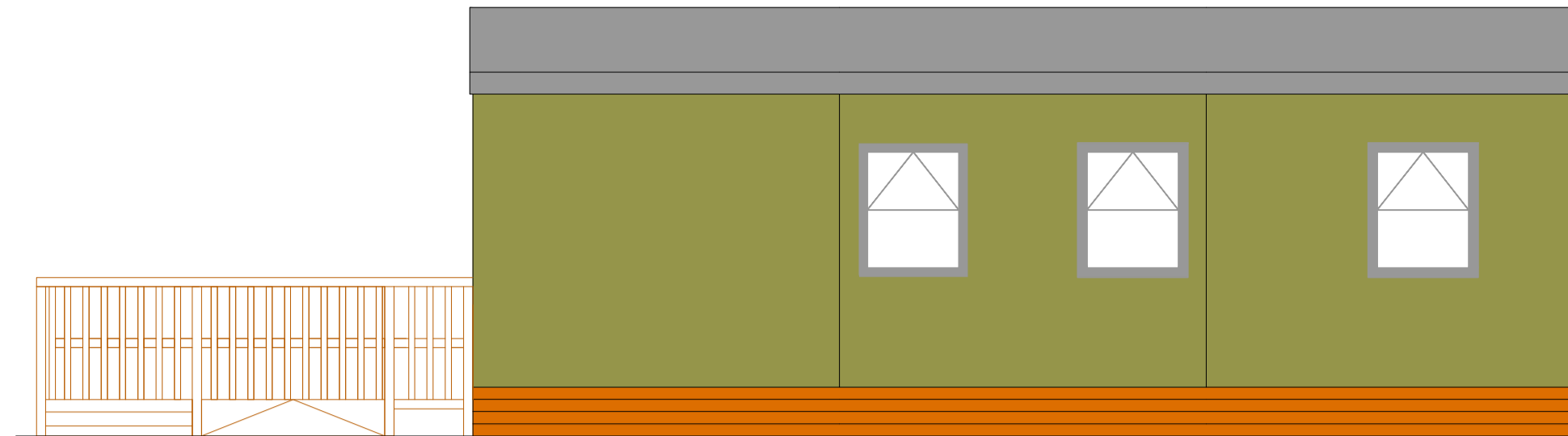
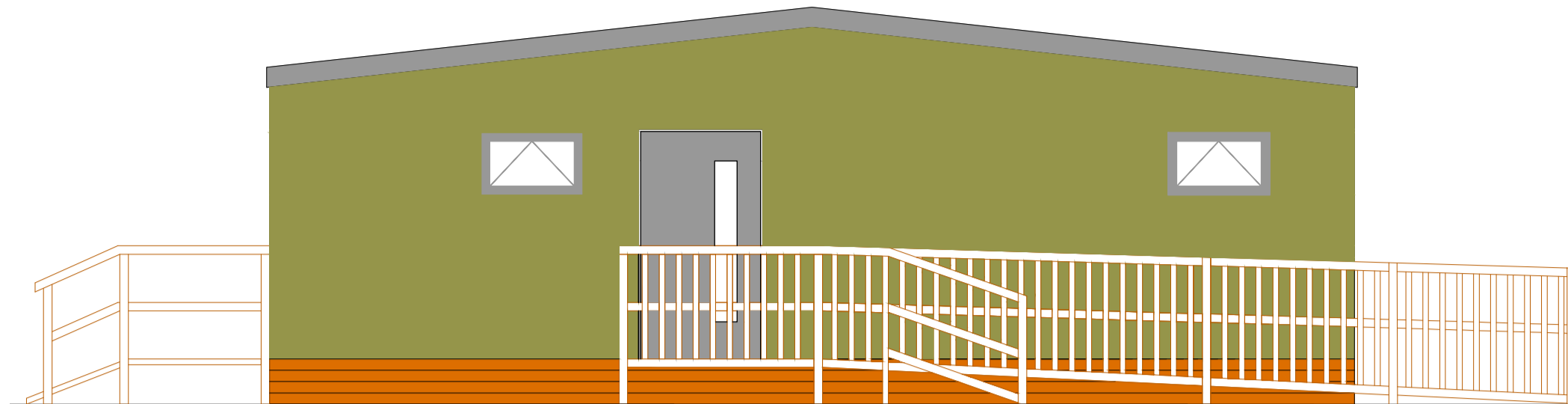


NOTES

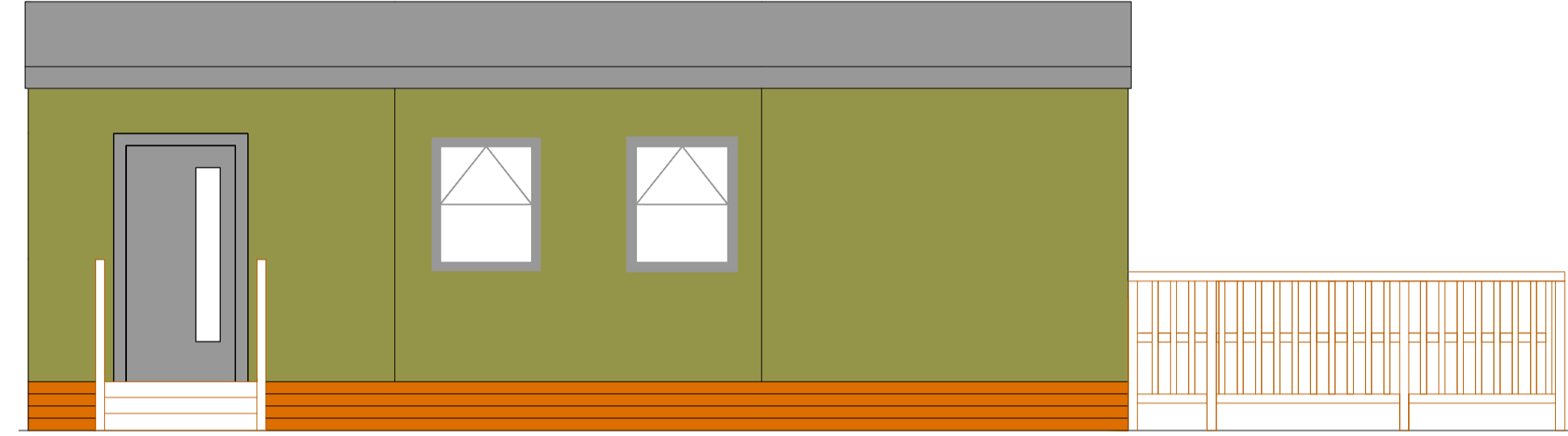
- 1.1 Do not scale.
- 1.2 All dimensions are in millimetres unless otherwise specified.



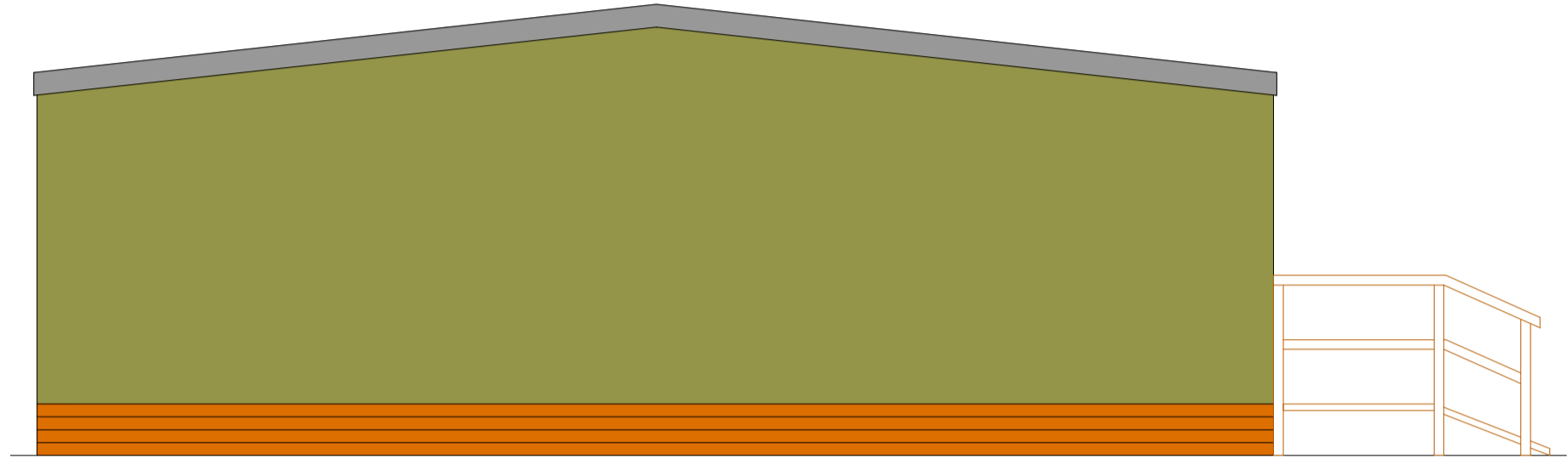
ELEVATION A
SCALE 1:50



ELEVATION B
SCALE 1:50



ELEVATION C
SCALE 1:50



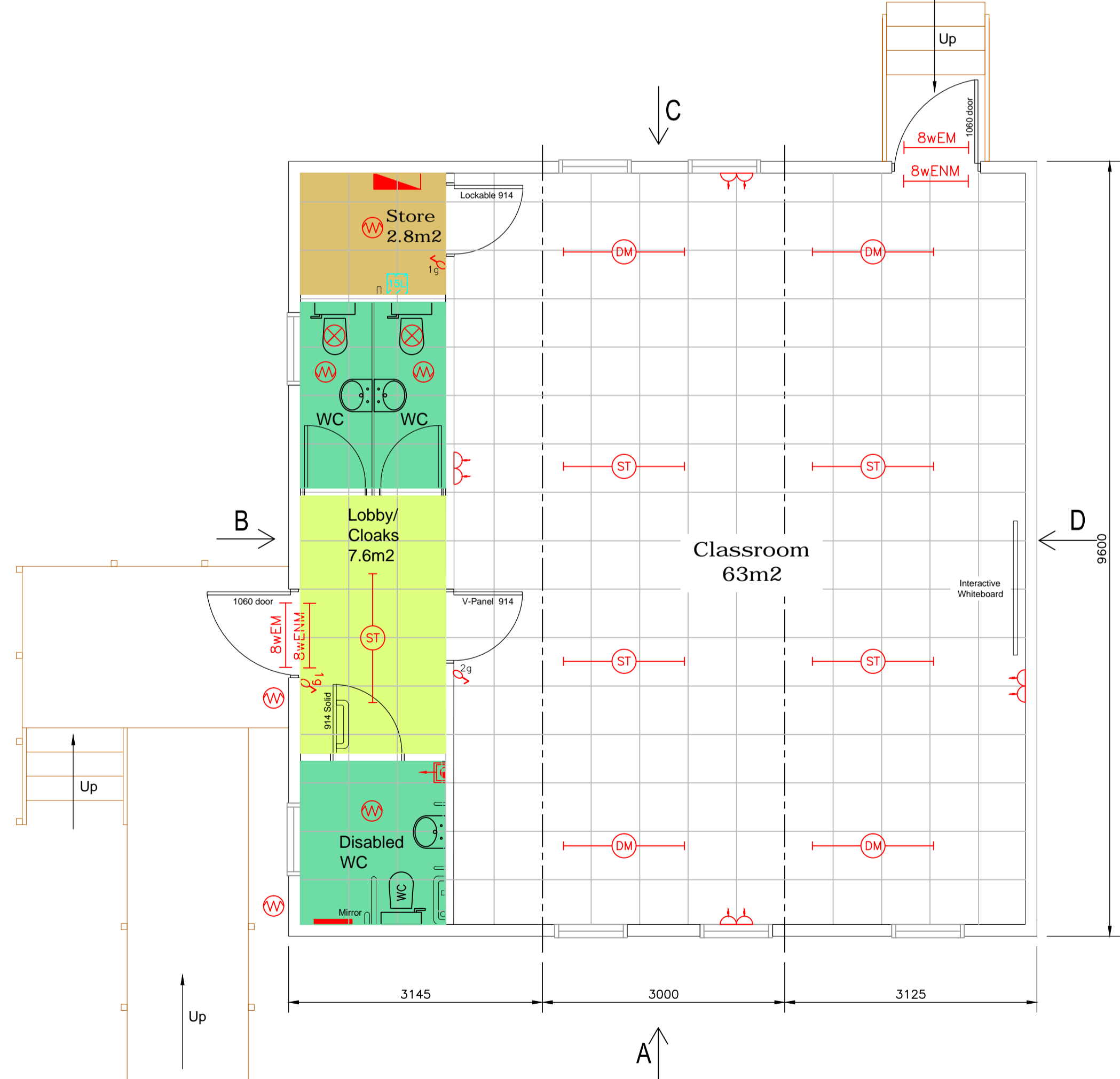
ELEVATION D
SCALE 1:50

KEY

- Distribution board.
- 28w 2D bulkhead light.
- 28w 2D Emergency bulkhead light.
- 1600 HF TS Dimmable fluorescent strip light.
- 1600 HF TS fluorescent strip light.
- 1600 HF TS Emergency fluorescent strip light.
- 1600 HF TS fluorescent strip light with motion sensor.
- 8w Emergency maintained light (250mm from ceiling).
- 8w Emergency non maintained light (250mm from ceiling).
- Single socket.
- Double socket (540mm AFFL).
- 20amp double pole switch (540mm AFFL).
- Grid switch (1040mm AFFL).
- Pull switch.
- Water heater - Ariston ST50 (1100mm AFFL).

ROOM TYPE COLOUR CODING

- Classroom Area
- Store Area
- Corridor and Lobby Area
- Abutions Area



FLOOR PLAN AND ELEVATIONS DRAWING
SCALE 1:50



EXAMPLE PHOTOGRAPH - EXTERNAL



EXAMPLE PHOTOGRAPH - INTERNAL

NO.	REVISIONS	CHK	DATE

MRC
MARTIN REYNOLDS CONSTRUCTION

BARROWAY DROVE
DOWNHAM MARKET
NORFOLK PE38 0AL
TEL: 01960 324297
FAX: 01960 224432
EMAIL: sales@mrc-construction.co.uk
www.martinreynoldsconstruction.co.uk

CLIENT
EXAMPLE DRAWING

SITE DETAILS
3 BAY SINGLE CLASSROOM WITH
WITH DISABLED TOILETS

FILE NUMBER	DRAWING No.	REVISION
DRAWN DW	DATE 03/11/09	

Scale: 1:100 @ A3